

Venice, June, 2013



*Turning Landscapes into an Open-air Classroom:
The Case Study of the Ljubljansko
Barje Landscape Park*

Mateja Šmid Hribar
Anton Melik Geographical Institute ZRC SAZU



Project cofinanced by European Regional Development Fund in the framework of the MEDPROGRAMME



What can cultural landscape “teach us”?

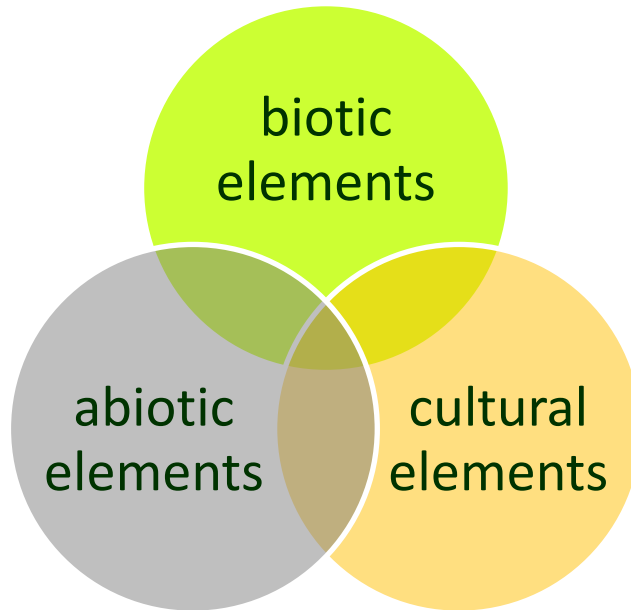
Introduction

LANDSCAPES

Ljubljansko barje

Interpretation

Conclusions



cultural landscape at the same time

- natural/ecological system
- socio-cultural system



cultural landscape = classroom

→ reveals

- nature
- local history
- previous relationships, interactions, adjustments of man to nature

The case study of Ljubljansko barje Nature park

Introduction

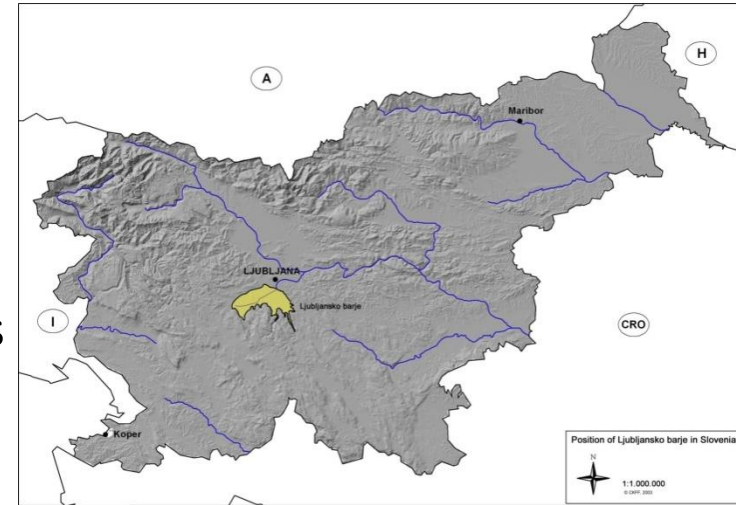
landscapes

LJUBLJANSKO BARJE

Interpretation

Conclusions

south of Ljubljana, Slovenia
 approx. 160 km² → one of the
 largest complex of wet grasslands
 highly structured mosaic of
 grasslands, fields, woodland
 islands, ditches and hedges
 rich biodiversity
 rich cultural heritage
 (archeological, ethnological)
 green recreational area



The case study of Ljubljansko barje Nature park

Introduction

landscapes

LJUBLJANSKO BARJE

Interpretation

Conclusions

One of the most changed landscapes in Slovenia

- settled at least since the Neolithic → prehistoric settlements (pile-dwellers) ~4000-2000 BC
- Roman regulation of Ljubljanica river
- 2/2 18th century several drainage efforts for the agriculture
- 1830- colonisation
- 19th century peat cutting
- today
 - urbanization
 - intensive farming/corn fields
 - abandoning agricultural use



The case study of Ljubljansko barje Nature park

Introduction

landscapes

LJUBLJANSKO BARJE

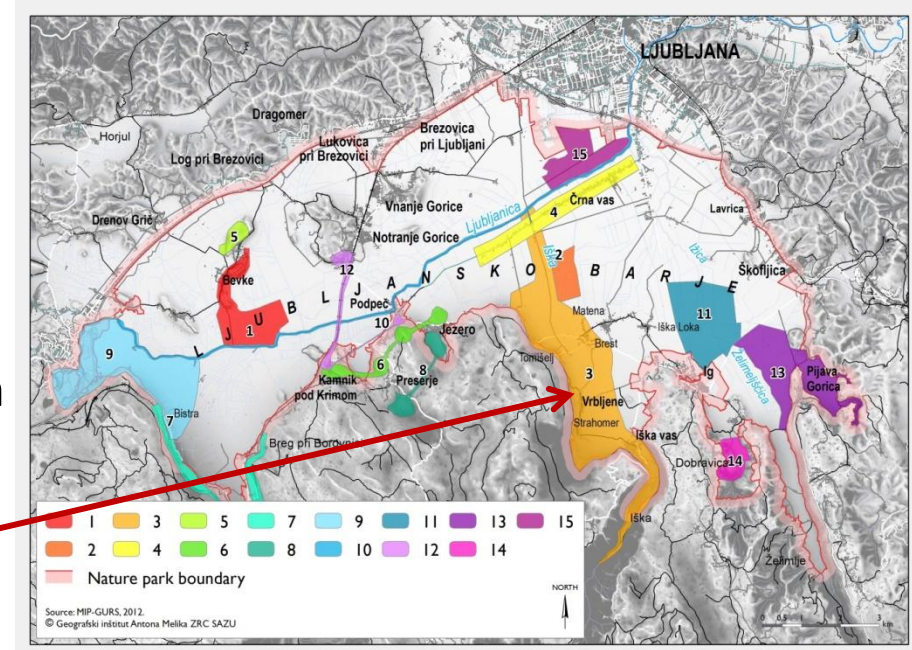
Interpretation

Conclusions

- different places/areas were identified as interesting for interpretation
- within the 2Bparks project the area of Iška river watershed was chosen



the story of Iška river was studied and new approach of interpretation was developed



Holistic interpretation

Introduction

landscapes

Ljubljansko barje

INTERPRETATION

Conclusions

The most important aspects for interpretation:

- **UNDERSTANDING** of the main elements and processes in the **landscape** (structures, functions, changes)
- **WHAT** to interpret
- **HOW** and **FOR WHOM** to interpret

Holistic interpretation of the Iška river story – *WHAT*

Introduction

landscapes

Ljubljansko barje

INTERPRETATION

Conclusions

Iška river watershed →

3 “faces” of the Iška river on a very short distance (29 km)→

diverse landscapes types

The Iška canyon



The Iška fan



Once meander, between 1796 - 1798 changed by man into a canal



Aims:

- learn about different geomorphological features
- highlight the importance of groundwater and surface water
- old settlements on the contact of fan and marsh (old knowledge)

Holistic interpretation of the Iška river story – *HOW and for WHOM*

Introduction

landscapes

Ljubljansko barje

INTERPRETATION

Conclusions

HOW

in live

on line

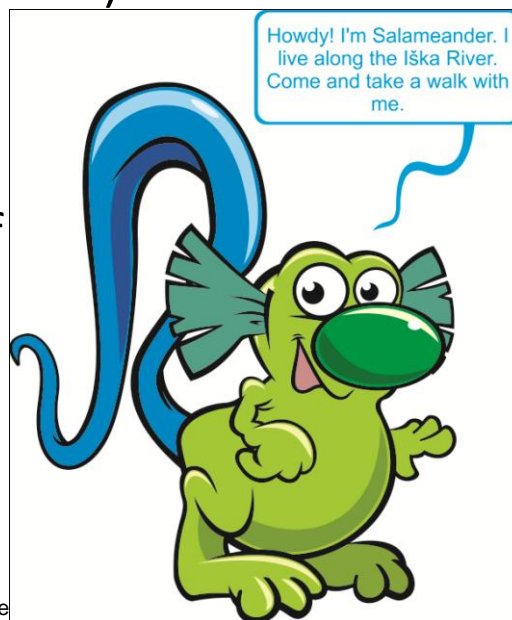
- didactic trail (board, leaflets)
- e-lectures (for different age, instructions for teaches)

- database/bank of excercises
- architecture design of interpretative center focusing on water



For WHOM

- children
- students
- families
- tourists



Experimental e-lectures

Introduction

landscapes

Ljubljansko barje

INTERPRETATION

Conclusions

3 freely accesible online multimedia e-lectures connected with Iška river story and interpretative trail (in Slovenian and English)

- on Sawing and Grinding (age between 8 – 10)
- on water from the Spring to the Tap (age between 12 – 14)
- on the Triple Character of the Iška River (for secondary school students)



The Iška River: From Spring to Faucet

The groundwater in the Iška Fan is an important source of drinking water system at the Brest Pumping Station, which is one of five supply system, even though it's relatively far from the city. The Brest Pumping Station supplies about one-tenth of the drinking water in Ljubljana. It also supplies most of the nearby settlements.

The company [Javno Podjetje Vodovod-Kanalizacija d.o.o.](#), draws water from only of fifteen bored wells because some wells are too deep.

The Three Faces of the Iška River

Put the photos of the land along the Iška on the map in order from source to mouth.

Sawing and Grinding

Put the images on the right into the big picture. Make up a story called: **HOW THE TREE BECAME A TABLE?**

Experimental e-lectures

connected to one another → offering different ways to get familiarized with the material

additionally **didactic recommendations** for teachers
+ **in-depth instructions** on executing the lecture in class with each slide being accompanied by:

- the work done by the teacher
- the work of the student
- the curriculum execution and
- the educational goals.

e-Lectures in Slovenian can be found at
<http://www.ljubljanskobarje.si/potepanja-po-ljubljanskem-barju/ucne-poti/2>
... in English coming soon!

Introduction

landscapes

Ljubljansko barje

INTERPRETATION

Conclusions

Database/bank of exercises

Freely accessible online database of exercises connected with Iška river interpretative trail and e-lectures. Each exercise includes:

- title
- keywords
- **age**
- approximate time
- **recommended size of a group**
- **instructions for teachers**
- **learning objectives**
- teaching utility
- the proposed location
- instructions for pupils
- additional material to perform a task (photos, maps, charts, tables, ...)
- space to carry out a task (space, empty table, the middle map, ...)
- question
- **potential answer**
- references (eg. Digital encyclopaedia DEDI, interpretative boards, ...)

Introduction

landscapes

Ljubljansko barje

INTERPRETATION

Conclusions

Interpretative center

Architectual design of educational interpretative center in the Iška vilage → focusing on water

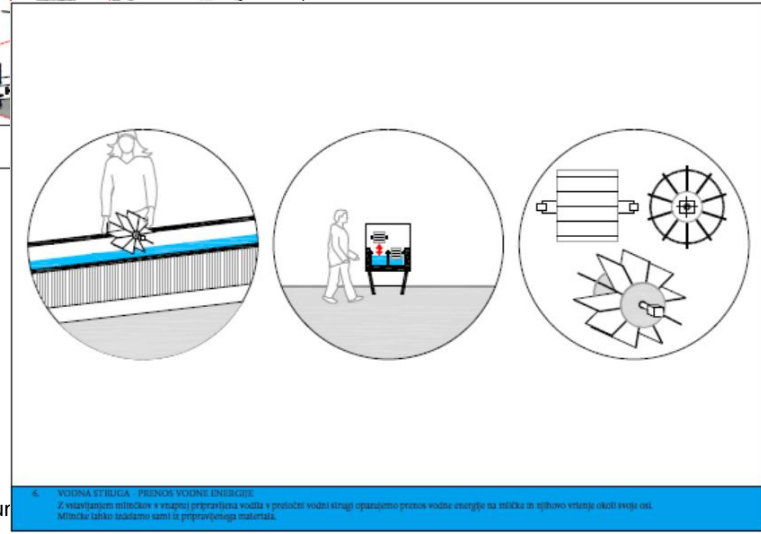
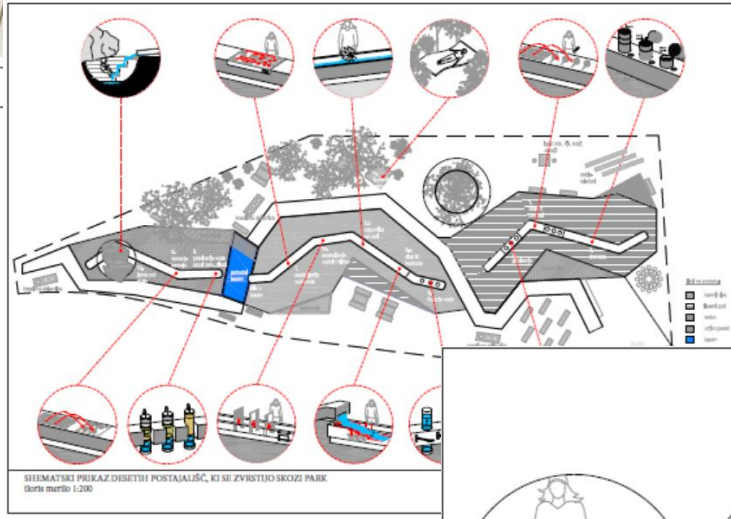
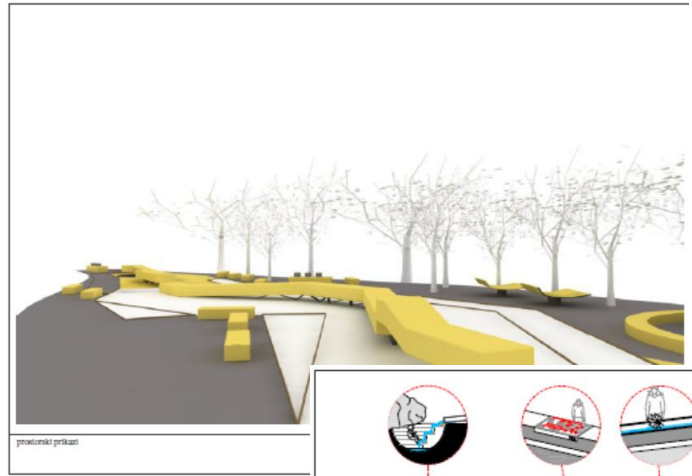
Introduction

landscapes

Ljubljansko barje

INTERPRETATION

Conclusions



Conclusions

Introduction

landscapes

Ljubljansko barje

Interpretation

CONCLUSIONS

We can **learn** a lot **from landscapes!**

Appropriate interpretation is needed for different target groups:

- learning from experience – IN LIVE
 - trails
 - educational - interpretative centers
- learning by exploring web and multimedia material - ON LINE
 - dynamic e-lectures



**GET FAMILIAR AND UNDERSTAND THE LOGIC OF LANDSCAPES
AS OUR LIVING ENVIRONMENT**

Thank you for your attention!
... and

Kindly welcome to Ljubljansko barje

