

**POPULATION GROWTH IN THE BORDER VILLAGES OF SREM, SERBIA**

Tamara Lukić, Milka Bubalo-Živković, Bojan Đerčan, Gordana Jovanović



Children in the village Bikić Do.  
BOJAN ĐERČAN

**Population Growth in the Border Villages of Srem, Serbia**

DOI: 10.3986/AGS54103

UDC: 911.373:314.116(497.11)

COBISS: 1.01

**ABSTRACT:** Population growth in the border villages of Srem (Vojvodina, Serbia) has been analysed in this paper, with the goal of explaining how and why it differed from other areas in the region. Special attention has been paid to the 1990s, because these villages became part of a border region and a high level of migration on the territory of the former Yugoslavia occurred, much of it through this territory. The results of the research are derived from literary resources and applying mathematical and statistical procedures in the processing of data received from the Statistical Office of the Republic of Serbia. They were checked on the field via a questionnaire.

This paper is significant because it enriches knowledge about villages of Srem, the municipality of Šid and population trends at the end of the 20<sup>th</sup> century.

**KEY WORDS:** Serbia, Srem, Municipality of Šid, population growth, immigration, border rural settlements, ethnic composition

The article was submitted for publication July 1, 2011.

**ADDRESSES:**

**Tamara Lukić, Ph. D.**

Faculty of Science

University of Novi Sad

Trg Dositeja Obradovića 3, 21 000 Novi Sad, Serbia

E-mail: snstamara@yahoo.com

**Milka Bubalo Živković, Ph. D.**

Faculty of Science

University of Novi Sad

Trg Dositeja Obradovića 3, 21 000 Novi Sad, Serbia

E-mail: miladin32dus@yahoo.com

**Bojan Đerčan**

Faculty of Science

University of Novi Sad

Trg Dositeja Obradovića 3, 21 000 Novi Sad, Serbia

E-mail: bojandjercan@yahoo.co.uk

**Gordana Jovanović, Ph. D.**

Faculty of Science

University of Novi Sad

Trg Dositeja Obradovića 3, 21 000 Novi Sad, Serbia

E-mail: gordanagjovanovic@yahoo.com

## **1 Introduction**

With the collapse of Yugoslavia at the beginning of the 1990s, new borders were established, and consequently border villages. Literary sources (Penev 1994; Kovačević 2006; Kovačević et al. 2009; Ivkov-Džigurski et al. 2010) mention problems of the new border villages in Serbia. Among them in particular are demographic problems, such as depopulation, emigration, the ageing of the populace etc. (Vujadinović et al. 2010). These problems also appear in other parts of Europe, according to other sources (Machold et al. 2002; Ni Laoire 2000; Stockdale 2002, 2006).

This research on the population trends in the border villages of Srem had as its goal the determination of the parameters of the population movement and thereby illustrating to what extent drawing the border had in demographic sense positive or negative influence on these

villages. For that reason, particular attention has been paid to the period between the last two censuses. Đurđev et al. (2004) stated that according to the 2002 census refugees and displaced persons from the region of the former Yugoslavia caused regional differences in the growth rate of the population of Vojvodina. The share of this category of people in the total population in the municipality of Šid, in 2002, had the highest value at 23.4%. Given that the wartime operations in Croatia and Bosnia and Herzegovina stopped in the mid 1990's, it must be assumed that there were even more of people present at that time but many of them lost their refugee status by obtaining citizenship.

Srem, one of three regional units of the Autonomous Province of Vojvodina, has fourteen border settlements (VGI 1982; 1982a; 1982b; 1983). From that number, two border villages (Neštin and Vizić) are part of the municipality of Bačka Palanka (Bogdanović et al. 1997), one (Sremska Rača) is located in the municipality of Sremska Mitrovica (Ćurčić et al. 2002) and eleven settlements (Figure 1) are part the municipality of Šid (Ćurčić 2001). Considering the fact that most of the settlements are located in the municipality of Šid, because of the factors of standardisation of local self-management performance, this paper will be focused only on these villages. According to the categorisation of settlements by Statistical Office of the Republic of Serbia, only one of eleven settlements in the municipality of Šid has been deemed to be a 'town settlement' (Statistical Office of the Republic of Serbia, 2004a). The multi-functionality of this settlement, which is simultaneously the municipality centre, puts other villages into an unequal position. The administrative and management functions of the settlement imply the presence of other functions, e.g. educational, cultural, etc., and in that way positively modify the demographic situation. For that reason, Šid will be excluded from the analysis, and only village settlements will be compared.

## 2 Material and methods

This paper is the result of analyses of data received at the Statistical Office of the Republic of Serbia. Data were illustrated by drawing maps: relevant content was extracted from existing figures, in order to form the desired maps.

The results of the research were verified on the field by conducting a questionnaire for one hundred respondents, i.e. an interview was conducted with ten respondents in each village. Respondents were between the ages of 19 and 65, and both sexes were equally represented. The aim of the interview was to explain some occurrences observed in the analysis and processing of statistical data. For that reason, the questions were of an open character, and answers to them were not predictable.

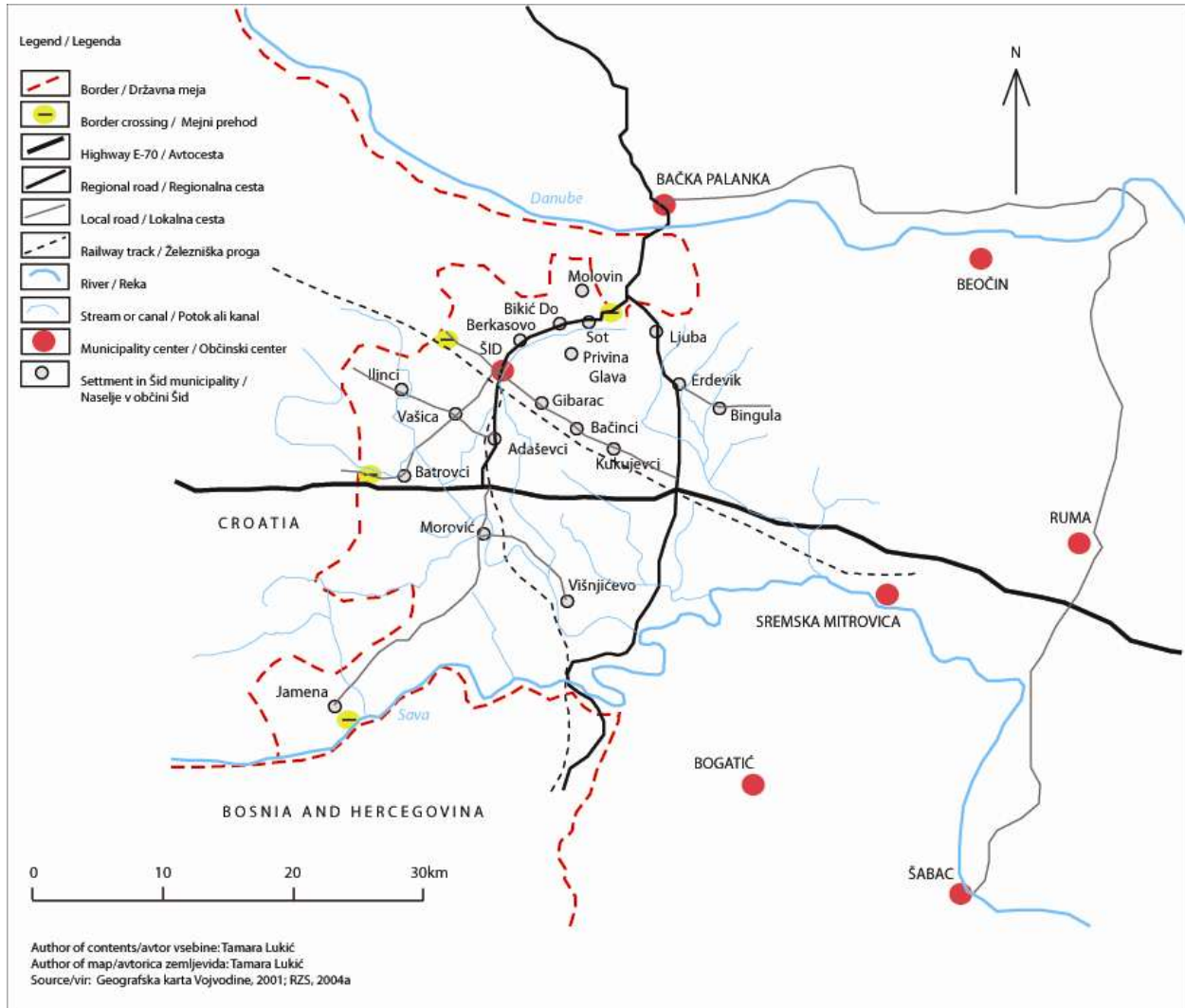


Figure 1: Geographic position of settlements in the municipality of Šid.

### 3 Results and discussion

The analyses of the population trends should find and explain differences in the movements of people in the border villages of the municipality of Šid in the period from the census in 1991 to the census in 2002. In addition to the explanation will be a discussion of the ethnic structure of the population, and the results of the conducted interview.

#### 3.1 Population figures

An international recommendation was accepted that the census be carried out every ten years, in the first year of the decade; this has been the practice since 1961 (Stanković 2006). Because the census that should have been carried out in 2001 was made in 2002, the comparability of census data was seriously damaged; nevertheless, certain tendencies in population trends could be observed (Đurđev et al. 2010).

According to the 1991 census, the population of the border villages in this area ranged from 299 inhabitants, registered in Bikić Do, to 2105 inhabitants in Morović. Differences in the population



Batrovci	464	399	361	-65	-38	-16.3	-10.5
Berkasovo	1217	1103	1258	-114	155	-10.3	12.3
Bikić Do	301	299	336	-2	37	-0.7	11.0
Vašica	1740	1636	1758	-104	122	-6.4	6.9
Ilinci	1011	883	843	-128	-40	-14.5	-4.7
Jamena	1577	1399	1241	-178	-158	-12.7	-12.7
Ljuba	639	585	563	-54	-22	-9.2	-3.9
Molovin	362	305	298	-57	-7	-18.7	-2.3
Morović	2196	2105	2272	-91	167	-4.3	7.4
Sot	900	819	816	-81	-3	-9.9	-0.4
Villages*	10407	9533	9746	-874	213	-9.2	2.2
Town (Šid)	13450	14275	16834	825	2559	5.8	15.2
Municipality*	37459	36317	40255	-1142	3938	-3.1	9.8

Note: Villages\* – 10 border villages of the municipality of Šid; Municipality\*\* – all (19) settlements of the municipality of Šid; Source: Statistical Office of the Republic of Serbia, 2004a; own calculations.

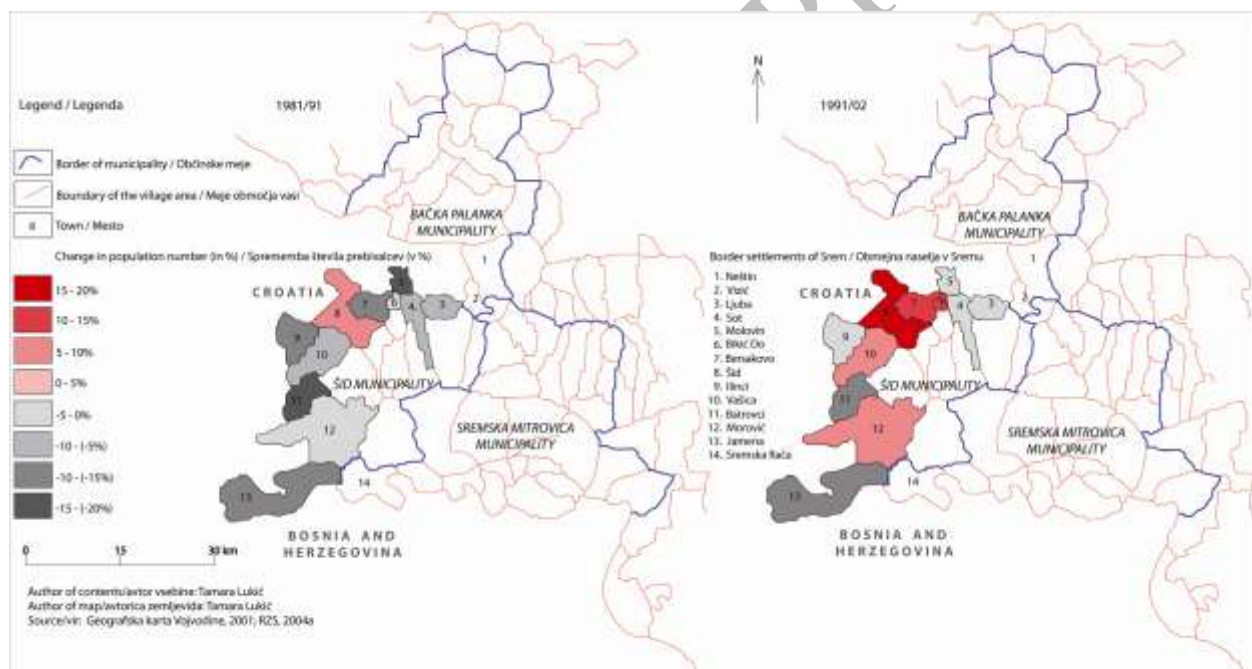


Figure 2: The change in the population (in %) in the border villages of the municipality of Šid, according the 1981- 2002 censuses.

### 3.2 Population trend

Changes of the values of population were explained in parameters of population trends, i.e. rates of natural population growth and migration balance were calculated.

#### 3.2.1 Natural movement

According to the rate of natural population growth, among the border villages of the municipality of Šid there are three types of villages: villages that did not register positive natural population growth in the observed period, from 1991 to 2001 (Vašica, Ilinci, Jamena and Sot), villages that registered positive natural population growth in one year (Batrovci, Berkasovo and Morović) and villages that had positive natural population growth in four of ten years (Molovin, Ljuba and Bikić Do) (Table 3).

Table 3: Changes of the rate of natural population growth (in ‰) in border villages of the municipality of Šid in the period between 1991 and 2001.

Settlement	1991	1992	1993	1994	1995	1996	1997	1998	1999	2000	2001
Batrovci	-4.4	-6.7	13.5	-18.3	-18.6	-7.1	4.8	-12.2	-24.7	20.1	-20.2
Berkasovo	-5.0	-8.4	-5.1	-5.1	-3.5	11.3	-17.6	5.3	-20.6	13.6	-13.4
Bikić Do	-19.9	-13.3	0.0	-10.0	-3.3	-3.3	-3.3	10.0	10.0	10.0	6.6
Vašica	-1.7	-6.4	-7.0	-4.7	-9.5	-7.8	-12.0	-9.7	-7.9	14.1	-14.6
Ilinci	-17.0	-12.2	-2.1	-11.5	-18.0	18.2	-6.5	-8.8	-20.1	-6.8	-17.1
Jamena	-7.1	-12.3	0.0	-10.6	-8.8	11.6	-9.7	-11.2	-14.8	-5.7	-14.5
Ljuba	6.3	-11.1	-9.6	-9.7	-13.1	16.5	0.0	1.7	-1.7	3.4	3.4
Molovin	2.8	-8.6	-8.7	0.0	-15.0	3.1	0.0	-12.7	-6.4	3.3	6.6
Morović	-3.7	-7.8	-5.1	-6.0	0.0	3.7	-11.7	-5.7	-6.1	-6.2	0.0
Sot	-13.5	-12.5	14.9	-11.5	-2.3	10.6	-14.2	-3.6	-13.3	19.5	-22.0
Villages*	-6.3	-9.9	-6.6	-8.7	-9.2	-8.0	-7.0	-4.7	-10.6	-6.9	-8.5
Town (Šid)	2.1	0.2	2.4	-1.5	1.2	1.4	-1.1	-2.1	-1.4	-1.7	-1.0
Municipality**	-2.0	-4.9	-3.0	-4.8	-4.1	-3.3	-5.1	-3.1	-6.1	-5.2	-5.4

Note: Villages\* – 10 border villages of the municipality of Šid; Municipality\*\* – all (19) settlements of the municipality of Šid; Source: Statistical Office of the Republic of Serbia, 2004a; Statistical Office of the Republic of Serbia, 2010; own calculations

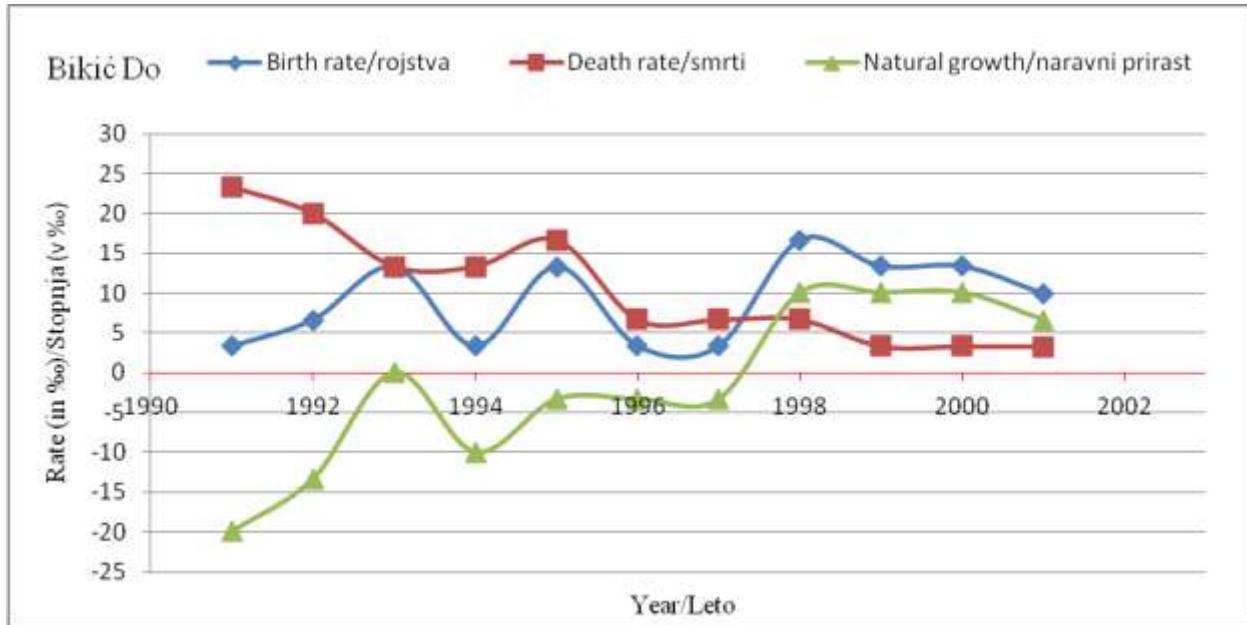


Figure 3: Changes of the rate of natural population growth of Bikić Do in the period between 1991 and 2001; Source: Statistical Office of the Republic of Serbia, 2010; own calculations.

From the border villages of Srem that were singled out as those in which the population increased, only Bikić Do distinguished itself also as one in which positive natural population growth was registered and has occurred continuously during previous four years (Figure 3). In other border villages, the changes of population were mainly influenced by mechanical population movement.

The town's population growth rate in the first half of the observed decade, except for 1994, had a positive value, followed by a negative one. Positive population growth could not compensate for the volumes of negative rates in municipal settlements, so the population growth rate at the municipal level, had permanent negative values in the observed period, showing a negative growth tendency. Thus, population growth could be the result of a solely mechanical movement of population, i.e. immigration.

### 3.2.2 Migrations

Migration into Europe has been on the rise in recent decades (Hooghe et al. 2008; Meuleman et al. 2009). Regions of the former Yugoslavia, to which the border villages of the municipality of Šid also belong, have followed this trend in their own way. This is the best illustrated by analysing the proportions of immigrant populations. According to the 2002 census, the immigrant population constitutes the majority in the municipality of Šid (56.3%), as well as in the town (57.1%) and in the border villages (52.9%). Specifically, the portion of the population that has lived in the border villages of the municipality of Šid from their birth, the so-called natives, differs greatly, ranging from 36.7% in Morović to 63.7% in Ljuba (Table 4). Border villages in the municipality of Šid in which less than 50% of the people are natives are those villages that have increased their populations. From other border villages, only Sot is part of this group.

In all the border villages of the municipality of Šid, the majority of the immigrant population is comprised of people who have migrated from the territories of former Yugoslav republics, other

than Serbia (Lukić and Matijević 2006). Except the village Ljuba, their portion in the total immigrant population exceeds 50% (Table 5). The share of the immigrant population on the municipal level (63.3%) and on the town level (52.1%), is lower than the share in the border villages of the municipality of Šid (69.7%). Refugees are those people who do not plan to migrate, but they are suddenly forced to do so, and consequently they make little preparation and generally do not know their destination (O’Docherty Madrayo 1988). In the interviews, it was concluded that for most of the immigrant population, and almost 100% of the female respondents, the main reason for migration was the fear of potential violence, i.e. war trauma. This fact is concurrent with the research results Lim et al (2007; 1542) and Vrečer (2010, 499). In the questionnaire, one of the questions referred to the factors that crucially affected the immigrants’ choice to migrate to a certain village. The answers were different, but among them the most frequent were the following: in some villages they already had relatives, rarely friends; in some villages, the prices of real estate were more favourable; some villages, for example on the slopes of the Fruška Gora mountain, had similar landscape characteristics to the area they came from, i.e. for those from hilly terrain, it is more difficult to adjust to life on the plains and vice versa; personal reasons, for example forming the family, etc. Some of these answers coincide with the results of Pilkington (1998) and Lukić and Nikitović (2004).

Table 4: Share of natives in total population, according the census 2002 in the border villages of the municipality of Šid.

Settlement	Sum	Natives		Immigrants	
		Number	%	Number	%
Batrovci	320	193	60.3	127	39.7
Berkasovo	1228	475	38.7	753	61.3
Bikić Do	336	158	47.0	178	53.0
Vašica	1717	842	49.0	875	51.0
Ilinci	827	478	57.8	349	42.2
Jamena	1130	586	51.9	544	48.1
Ljuba	559	356	63.7	203	36.3
Molovin	298	170	57.0	128	43.0
Morović	2164	794	36.7	1370	63.3
Sot	791	360	45.5	431	54.5
Villages*	9370	4412	47.1	4958	52.9
Town (Šid)	16311	7004	42.9	9307	57.1
Municipality**	38973	17019	47.3	21954	56.3

Note: Villages\* – 10 border villages of the municipality of Šid; Municipality\*\* – all (19) settlements of the municipality of Šid; Source: Statistical Office of the Republic of Serbia, 2004b; own calculations

In some of the border villages, significant portions of migrants who did not come from the territories of former Yugoslavia stand out. For example, 43.3% of migrants in Bikić Do and 35.3% in Berkasovo are settled populations of intra-municipal migrations. In the interviews, it was stated that the reason many migrated from other municipal villages to Bikić Do or to Berkasovo was that these places are populated by Rusyn minority, and some of the respondents think that Rusyns settle in these villages for the reason of marriage.

In Ljuba, it has been recorded that more than one third of the settled population (33.5%) are migrants who settled from the territories of other municipalities in the Republic of Serbia. In interviews it was found out that Ljuba is settled by the Slovak minority, and that these migrants have origins in the municipality Kovačica (Padina and Kovačica settlements), Bački Petrovac (Bački Petrovac, Gložan and Silbaš settlements), Beočin (the village of Lug), Stara Pazova (Stara Pazova settlement) and Bač (the village of Selenča) and others, i.e. from municipalities settled by Slovaks. Moreover, while talking with the local population, it was determined that Slovaks cherish their relations with their mother-land and that part of the marriage migrations happen between Ljuba and villages in Slovakia. This directly explains the fact that this village has the highest percent of people from the territories of other countries compared to other border villages of the municipality Šid (Table 5).

In the second place according to the level of migrant origin are those that have settled in the area as a result of intra-municipal migration. Such people represent nearly one in three immigrants (30.3%) in the town of Šid and one in five in the municipality (21.0%). According to Lukić and Tošić (2011, 322), the current economic reforms, the process of deindustrialisation and the privatisation of larger enterprises have been significant for changes in the commuting flows (directions and structure). The increase in the number of commuters in Serbia is one of the ways in which the population is adapting and overcoming the problems of unemployment and the lack of adequate jobs in the local milieu, while simultaneously maintaining of commuting as the form of mobility that prevents further concentration of people in urban centres. The features of a municipality attract residents, but they change their place of residence towards other municipal settlements ‘in search of bread’. Based on the interviews, it was found that the jobs in the food-processing industry (Molovin and Berkasovo Wineries, ‘Agropapuk’ in Kukujevci, ‘Big Bull’ in Bačinci, etc.) appeared in rural settlements and thus they became the gravitational point for the working age population of the municipality.

Table 5: Share of migrants according to their origin, in total migrants (in %), according to the 2002 census in the border villages of the municipality of Šid.

Settlement	Sum	Same municipality	Other municipality	Other republics*	Former YU republics	Other countries	Unknown
Batrovci	127	13.4	7.9	5.5	72.4	0.0	0.8
Berkasovo	753	35.3	8.2	2.4	52.7	0.5	0.9
Bikić Do	178	43.3	5.6	0.0	50.6	0.0	0.5
Vašica	875	18.3	4.0	2.1	75.1	0.3	0.2
Ilinci	349	19.5	7.2	2.9	69.9	0.0	0.5
Jamena	544	6.6	3.7	4.2	83.8	0.7	1.0
Ljuba	203	18.2	33.5	0.5	45.8	1.0	1.0
Molovin	128	21.1	11.7	4.7	61.7	0.8	0.0
Morović	1370	14.2	6.0	4.5	74.2	0.7	0.4
Sot	431	13.0	6.5	1.6	77.0	0.5	1.4
Villages*	4958	18.9	7.2	3.0	69.7	0.6	0.6
Town (Šid)	9307	30.3	10.0	6.1	52.1	0.8	0.8
Municipality	2195						
**	4	21.0	9.6	4.5	63.3	0.8	0.8

Note: Villages\* – 10 border villages of the municipality of Šid; Municipality\*\* – all (19) settlements of the municipality of Šid; other republics\*\*\* – Montenegro (During the 2002 census, Serbia and Montenegro constituted Federal Republic of Yugoslavia (1992–2003)); Source: Statistical Office of the Republic of Serbia, 2004b, own calculations.

Shares of migrants in border villages of the municipality of Šid show that the majority of this part of the population of every village was settled during the 1990s, ranging from 27.8% in Jamena to 77.0% in Sot (Table 6). The period between 1946 and 1960 relates to the time of colonisation, which was conducted according to the Law on Agrarian Reform and Colonisation from 1945, by which population from hilly terrain of the former Yugoslavia (Gaćeša 1984, 113; Ćupurdija 1998, 225), i.e. from the same territory as from the observed decade (1990s), settled the territory of Vojvodina. The highest shares of population settled in that period were found in the southern border villages Jamena (25.6%) and Batrovci (23.6%).

In the migrant population, two groups have de facto been singled out: migrants who settled the border villages of the municipality of Šid for economical or political reasons, and migrants who came for personal reasons, i.e. marriage. In interviews, the following information was received: most people have no plans to return to the place from which they came; all of the interviewed people agreed that the border is characterised by great permeability, but they remember when there was no border. Most of the respondents, 73%, who found themselves in the border villages of the municipality of Šid for economic or political reasons said that they had adapted themselves to the environment in which they live and that while going back could be personally satisfying, it was not economically justifiable. They said if there were appropriate economic conditions, they would support (about 84%) the immigration of their children in directions further from the border. A small amount of respondents, about 12%, sees the border as a zone of connecting, and not dividing of people. Most, 92%, admit that there are the benefits to life next to the border. Most frequently they mention the prices of some products, which are lower on the other side of the border, and the profit they can make from selling different products to people from the Republic of Croatia. Similar phenomena have been determined in the other parts of the world (Fitzgerald et al. 1988; Timothy and Butler 1995; Sullivan and Kang 1997; Bygvra 1998; Wang 2004; Roper 2007).

Table 6: Share of migrants according to the time of immigration, in total migrants (in %), according to the census 2002 in the border villages of the municipality of Šid.

Settlement	Before 1940	1941–1945	1946–1960	1961–1970	1971–1980	1981–1990	1991–2002	Unknown
Batrovci	0.0	0.0	23.6	13.4	7.1	7.1	47.2	1.6
Berkasovo	0.9	1.1	7.4	11.8	9.3	11.2	54.8	3.5
Bikić Do	1.1	2.2	11.8	5.1	12.4	14.0	51.1	2.2
Vašica	1.3	0.3	8.3	4.9	3.9	7.9	71.9	1.5
Ilinci	1.1	1.4	18.3	12.0	12.9	8.3	44.1	1.7
Jamena	1.5	0.6	25.6	20.6	11.0	8.1	27.8	5.0
Ljuba	3.0	2.0	16.3	7.4	10.8	13.3	45.3	2.0
Molovin	1.6	1.6	6.3	17.2	17.2	12.5	43.0	0.8
Morović	0.7	0.5	12.9	11.2	8.8	9.1	55.5	1.2
Sot	0.5	0.2	5.1	3.2	4.9	6.7	77.0	2.3
Villages*	1.0	0.8	12.6	10.4	8.6	9.2	55.2	2.2

Town (Šid)	0.9	0.9	11.8	16.6	14.4	11.5	38.5	5.4
Municipality**	1.0	0.9	11.4	12.6	10.3	9.8	50.2	3.9

Note: Villages\* – 10 border villages of the municipality of Šid; Municipality\*\* – all (19) settlements of the municipality of Šid; Source: Statistical Office of the Republic of Serbia, 2004b; own calculations.

A positive migration balance for the period between 1991 and 2002 has been determined in half of the border villages of the municipality of Šid, i.e. in all villages in which there was an increase of population and in the village of Sot (Table 7). The example of Sot confirms that settled population will not have the crucial importance for the development of the population in the future; this is confirmed by data received from research by Nikitović and Lukić (2010). The rate of migratory balance in border areas of Srem (15.1 ‰) is quite similar to the value in the entire municipality (14.1 ‰). At present, the settled population has only covered depopulation.

Table 7: Migration balance of border villages of the municipality of Šid in the period between 1991 and 2002.

Settlement	Population growth	Average annual growth rate (in ‰)	Migration balance	Average annual rate of migration balance (in ‰)	Natural population growth	Average annual population growth rate (in ‰)
Batrovci	-38	-9.1	-24	24.5	-14	-33.6
Berkasovo	155	12.0	165	19.6	-10	-7.6
Bikić Do	37	10.7	39	15.5	-2	-4.8
Vašica	122	6.6	132	11.7	-10	-5.1
Ilinci	-40	-4.2	-26	10.3	-14	-14.5
Jamena	-158	-10.8	-147	-3.5	-11	-7.3
Ljuba	-22	-3.5	-17	3.9	-5	-7.4
Molovin	-7	-2.1	-3	8.7	-4	-10.8
Morović	167	7.0	172	9.0	-5	-2.0
Sot	-3	-0.3	11	15.0	-14	-15.3
Villages*	2559	15.1	2561	15.1	-2	0.0
Town (Šid)	213	2.0	293	2.8	-80	-0.8
Municipality**	3938	9.4	4115	14.1	-177	-4.7

Note: Villages\* – 10 border villages of the municipality of Šid; Municipality\*\* – all (19) settlements of the municipality of Šid; Source: Statistical Office of the Republic of Serbia, 2004a; 2004b; 2010; own calculations

### 3.3 Ethnic structure

Ethnic minorities have been present in the municipality of Šid for centuries. In Berkasovo, Bačinci, a rural village in the municipality of Šid that is not a border village and in the town of Šid itself, the arrival of Rusyns was recorded in 1746 (Đurđev 1998; Ivkov 2006, 45; Drljača 2006). At the end of the 18<sup>th</sup> century, the Diocese of Križevci (Croatia) moved the Rusyns from

the Bačka settlements of Ruski Krstur and Kucura (Gavrilović 1956, 70; 1958; 1977, 153–215; Đerčan et al. 2010, 66). However, according to Besermini (1937), Laboš (1979, 299) and Ramač (2009, 235), the Rusyns migrated from Krstur and Kucura, first to other settlements in Bačka and from the beginning of the 19<sup>th</sup> century to Srem and Slavonia, due to the troubles of the rural populace, which were caused by natural disasters, floods, drought and different field pests as well as due to the lack of arable land.

According to Sirácky (2002), Slovaks resettled in Slavonia and Srem in 1770. Stupavský (2010) reported the presence of Slovaks in Šid since 1810 and its existence within the military boundary with particular emphasis on the benefits of the town. According to Jankulov (1961), Slovaks inhabited the area in the middle of the 19<sup>th</sup> century. As he writes, the first families immigrated from Slovakia and Hungary, and in the second half of the 19<sup>th</sup> century they immigrated from Bačka on a larger scale. At that time, the area was also settled by Jews. The colonisation of the Hungarians is miniscule compared to other parts of Vojvodina.

A series of political developments, including changes in states' borders and the formation of new states, rendered Vojvodina a territory of migrations throughout the 20<sup>th</sup> century. These migrations have exerted a considerable impact upon Vojvodina's ethnic structure (Bjeljac and Lukić, 2008).

In calculating the shares of certain ethnic groups in the total number of inhabitants of border villages of the municipality of Šid, some of the information that was obtained by interviewing the population has been confirmed. According to the census from 2002, Serbs were the majority in eight out of ten observed villages. Rusyns were the majority in Bikić Do, but significant presence of them (15%) has also been determined in Berkasovo. Slovaks were the majority only in Ljuba (Figure 4). In order to determine whether and to what extent population trends affected the ethnic structure, data from the last two censuses have been compared, according to which the share of Serbs has been increased in all villages. This contingent of refugees has directly increased the ethnic homogeneity of population (Matijević et al. 2005, 119). This supports the assertion of Cordeiro (1996) and Samers (1998, 124) that immigrants do not have to also be ethnic minorities.

Data on Rusyns from 1991 were not published. The share of the Croats has decreased in all villages, in Morović and Vašice by more than two thirds. According to their share in the entire population, in 1991 the Croats were the majority in Sot (Table 8). In interviews, it was explained that in 1990s, during the wars on the territory of Former Yugoslav Republics, Croats from villages in the municipality of Šid agreed to exchange their houses with Serbs from the territories of Croatia and Bosnia and Herzegovina. There is some mention of this by Kovačević et al (2010, 72).

Moreover, it was reported that in some villages certain political parties acted repressively, thereby motivating the Croatian population to migrate. The proximity of the border, i.e. Croatian territory, was a powerful and attractive motive for the Croatian population to move to nearby villages on the other side of the border; some of them already owned and cultivated land there.

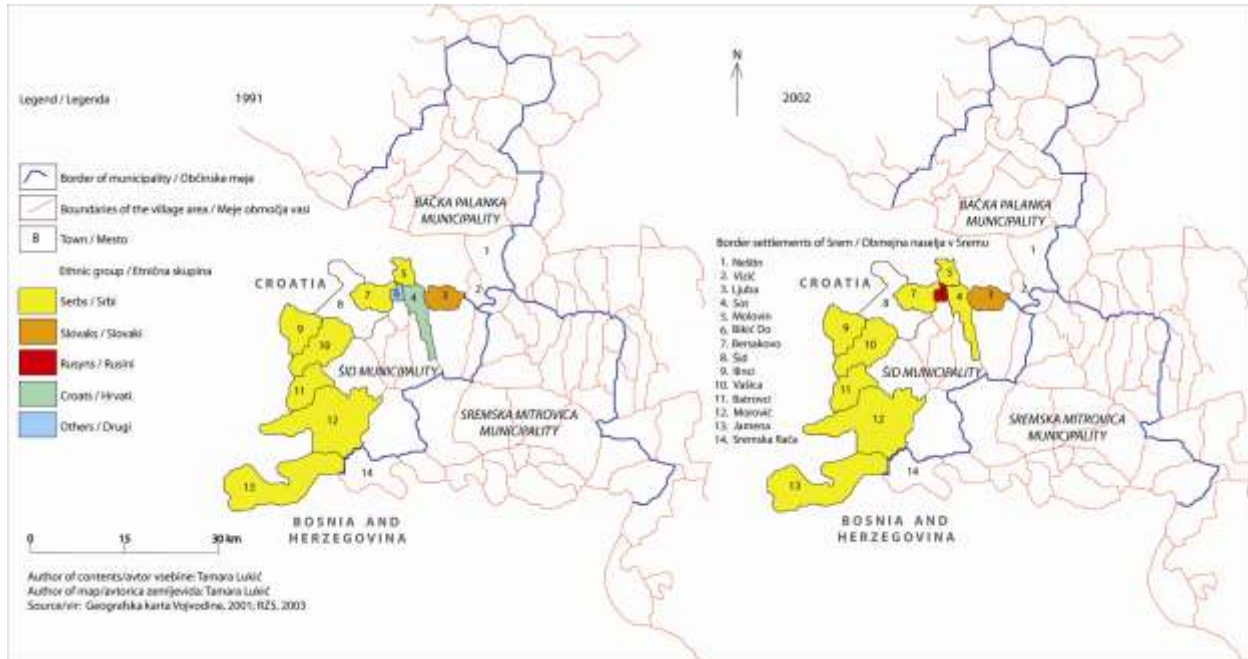


Figure 4: Dominant ethnicity in the border villages of the municipality of Šid, according to the 1991 and 2002 censuses.

Table 8: Ethnic structure of population in the border villages of the municipality of Šid (in %), according to the 1991 and 2002 censuses.

Ethnic group	Serbs		Slovaks		Rusyns		Croats		Others	
	1991	2002	1991	2002	1991	2002	1991	2002	1991	2002
Census	1991	2002	1991	2002	1991	2002	1991	2002	1991	2002
Batrovci	54.6	67.8	0.3	0.3		1.3	38.3	28.4	6.8	2.2
Berkasovo	54.7	68.5	2.3	1.7		15.0	8.3	3.8	34.7	11.0
Bikić Do	14.4	32.7	1.3	2.1		47.6	13.0	11.6	71.2	6.0
Vašica	63.9	86.2	2.4	1.4	No data	0.8	25.7	7.2	7.9	4.4
Ilinci	93.3	96.3	0.2	0.4		0.0	2.3	1.0	4.2	2.4
Jamena	88.8	93.4	0.0	0.0		0.3	4.6	2.8	6.6	3.5
Ljuba	9.9	16.5	55.9	53.8		0.4	28.2	22.7	6.0	6.6
Molovin	84.3	87.6	0.0	0.3		0.3	8.5	4.7	7.2	7.0
Morović	61.9	87.3	0.5	0.4		0.3	28.4	8.0	9.3	4.1
Sot	4.4	43.0	4.2	3.5		0.9	57.6	40.1	33.8	12.5
Villages*	59.0	75.6	4.6	4.2		4.1	21.5	10.4	14.8	5.8
Town (Šid)	63.5	76.2	6.9	5.5		4.2	8.8	4.4	20.8	9.7
Municipality**	59.7	77.6	7.8	6.5		3.4	16.7	5.4	15.8	7.2

Note: Villages\* – 10 border villages of the municipality of Šid; Municipality\*\* – all (19) settlements of the municipality of Šid; Source: Statistical Office of the Republic of Serbia, 2003; own calculations.

#### 4 Conclusion

Different tendencies in population trends were observed in ten border villages of the municipality of Šid in the period from the census in 1991 to the census in 2002. In four villages,

there has been a determined increase in population. Analysing the local geography, it has been determined that those villages, unlike the others, are located either on busy roads or at crossroads. The more favourable position attracted people to settle those villages. Analysing natural population movement, it has appeared that from the four villages, only Bikić Do has positive population growth during half of the observed period. Accordingly, it has been concluded that the other villages had increased populations only as a result of a mechanical flow of population, which is confirmed by the fact that during the observed decade mass immigrations of people from the territories of former Yugoslavia to the region were taking place in the Federal Republic of Yugoslavia as a whole, and in the municipality of Šid specifically. Interviewing the refugee population for the purpose of obtaining information on their intentions about further movement, the most common answer received was that it depended on the economic situation. However, while visiting the field, the presence of different ethnic minorities was observed, which initiated analyses of data on ethnicity and the making of ethnic maps. The map confirmed that Bikić Do is the only village dominated by the Rusyn minority, which could also be one of the reasons only this border village has positive natural population growth. Drawing borders has positively affected the population numbers of border villages of the municipality of Šid, but the migration balance shows that a one-time 'population dosage' cannot obtain population growth in the conditions of negative trends observed at natural population movement.

## 5 Acknowledgments

This paper is part of the project No. 114-451-2644/2012-01 funded by the Provincial Secretariat for Science and Technological Development of the Vojvodina Province, Serbia.

The authors are grateful to the reviewers, whose comments and criticisms have ensured the quality of the paper.

## 6 References

- Besermini, G. 1938: *Naseljovane Rusnacoa do Šidu*. Ruski kalendar 1937. Ruski Kerestur.
- Bjeljac, Ž., Lukić, V. 2008: *Migrations on the territory of Vojvodina between 1919 and 1948*. East European Quarterly 42. Boulder, CO.
- Bogdanović, Ž., Tomić, P., Romelić, J., Plavša, J., Lazić, L., Kralj, Đ. 1997: *Opština Bačka Palanka, geografska monografija*. Univerzitet u Novom Sadu, Prirodno-matematički fakultet. Novi Sad.
- Bygvra, S. 1998: *The road to the single European market as seen through the Danish retail trade: cross-border shopping between Denmark and Germany*. The International Review of Retail, Distribution and Consumer Research 8. London. DOI: 10.1080/09593969800000003
- Cordeiro, A. 1996: *Usages et contre-usages des statistiques du chômage des immigrés. Hommes et migrations*, 1204. Paris.
- Ćupurdija, B. 1998: *Izveštaj o stanju kolonizacije Bajmoka 1946. godine*. Zbornik Matice srpske za istoriju 58. Novi Sad.
- Ćurčić, S. 2001: *Naselja Srema – geografske karakteristike*. Matica srpska. Novi Sad.
- Ćurčić, S., Đuričić, J., Marjanović, V. 2002: *Opština Sremska Mitrovica, geografska monografija*. Univerzitet u Novom Sadu, Prirodno-matematički fakultet. Novi Sad.

- Derčan, B., Bubalo-Živković, M., Lukić, T. 2010: Demografske promene u pograničnim naseljima Srema na primeru Vašice. Zbornik radova Geografskog fakulteta u Beogradu LVIII. Beograd.
- Drljača, D. 2006: Rusnaci u etnografskih zapisoh/Rusini u etnografskim zapisima. Društvo za rusinski jezik, književnost i kulturu. Novi Sad.
- Đurđev, B, S. 1998: Geografija stanovništva. Institut za geografiju Prirodno-matematičkog fakulteta. Novi Sad.
- Đurđev, B., Arsenović, D., Dragin, A. 2010: Contemporary problems in studying population of Vojvodina Province. *Acta geographica Slovenica* 50-1. Ljubljana. DOI: 10.3986/AGS50105
- Đurđev, S., B., Martinov-Cvejic, M., Penev, G., Jovanović, S., Stevanović, R. 2004: Demografska situacija u Vojvodini poslednje decenije XX i početkom XXI veka. Zbornik Matice srpske za društvene nauke 116-117. Novi Sad. DOI:10.2298/ZMSDN0417199D
- Fitzgerald, J., D., Quinn, T., P., Whelan, B., J., Williams, J., A, 1988: An analysis of cross-border shopping. The Economic and Social Research Institute Dublin, General Research Paper 137. Dublin.
- Gaćeša, N. 1984: Agrarna reforma i kolonizacija u Jugoslaviji 1945-1948. Matica srpska – odeljenje za društvene nauke. Novi Sad.
- Gavrilović, S. 1956: Rusini u Šidu od 1803–1848. Godišnjak Filozofskog fakulteta u Novom Sadu I. Novi Sad.
- Gavrilović, S. 1958: Šid i šidsko vlastelinstvo (1699-1849). Zbornik Matice srpske za društvene nauke 16-19. Novi Sad.
- Gavrilović, S. 1977: Rusini u Bačkoj i Sremu od sredine XVIII do sredine XIX veka. Godišnjak Društva istoričara Vojvodine. Novi Sad.
- Geografska karta Vojvodine. 2001: AP Vojvodina 1:450.000. Magic Map. Smederevska Palanka.
- Hooghe, M., Trappers, A., Meuleman, B., Reeskens, T, 2008. Migration to European countries, A structural explanation of patterns, 1980–2004. *International Migration Review* 42(2). Malden, MA. DOI: 10.1111/j.1747-7379.2008.00132.x
- Ivkov, A. 2006: Demografska slika Vojvodine. Zadužbina Andrejević. Beograd.
- Ivkov-Džigurski A., Bubalo-Živković, M., Lukić, T., Dragin, A., Ivanović, Lj., Pašić M. 2010: Demografski razvoj pograničnih opština Banata u drugoj polovini XX veka. Pokrajinski sekretarijat za nauku i tehnološki razvoj i Departman za geografiju, turizam i hotelijerstvo. Novi Sad.
- Jankulov, B. 1961: Pregled kolonizacije Vojvodine u XVIII i XIX veku. Matica srpska. Novi Sad.
- Kovačević, T. 2006: Opština Subotica, geografska monografija. Univerzitet u Novom Sadu, PMF, Departman za geografiju, turizam i hotelijerstvo. Novi Sad.
- Kovačević, T., Đurđev, B., Arsenović D. 2009: Movement of population in the Romanian border region, Case studing: Nova Crnja municipality. *Geographica Timisiensis* 18 (1-2). Timișoara.
- Kovačević, T., Zakić, L., Bubalo-Živković, M. 2010: Age-gender Structure of Croats in Vojvodina Province. *Human Geographies* 4-2. Bucharest.
- Laboš, F. 1979: Istorija Rusinoh Bačkej, Srimu i Slavonii 1745–1918. Vukovar.
- Lim, M., Metzler, R., Bar-Yam, Y. 2007: Global Pattern Formation and Ethnic/Cultural Violence 317. *Science*. Washington, DC. DOI: 10.1126/science.1142734
- Lukić, V, 2010: Population Dynamics and Commuting in Serbia. Spatial demography of the Balkans: trends and challenges, 4<sup>th</sup> International Conference of Balkans Demography. Budva.

- Lukić, V., Matijević, D. 2006: Opštine u Vojvodini sa najvećim udelom izbeglica - uticaj na dinamiku i strukturne karakteristike populacije. Zbornik Matice srpske za društvene nauke 121. Novi Sad.
- Lukić, V., Nikitović, V. 2004: Refugees from Bosnia and Herzegovina in Serbia: A Study of Refugee Selectivity. *International Migration* 42-4. Oxford. DOI: 10.1111/j.0020-7985.2004.00296.x
- Lukić, V., Tošić, B, 2011: Daily commuting – similarities and differences between Serbia and Slovenia. *Acta geographica Slovenica*, 51-2. Ljubljana. DOI: 10.3986/AGS51205
- Machold, I., Dax, T., Meisinger, A. 2002: Youth participation in rural society in Maurau, Austria. In: T. Dax and I.I. Machold, Editors, *Voices of Rural Youth: A Break with Traditional Patterns? Byundesanstalt fur Bergbauernfragen*. Wein.
- Matijević, D, Tošić, B, Lukić, V. 2005: Uticaj migracija na populacione i funkcionalne promene sremskih opština. *Glasnik Srpskog geografskog društva* 85-1. Beograd.
- Meuleman, B., Davidov, E., Billet, J. 2009: Changing attitudes toward immigration in Europe, 2002–2007: A dynamic group conflict theory approach. *Social Science Research* 38-2. Internet: <http://dx.doi.org/10.1016/j.ssresearch.2008.09.006>
- Nikitović, V., Lukić, V. 2010: Could Refugees Have a Significant Impact on the Future Demographic Change of Serbia? *International Migration* 48 (1). Oxford. DOI: 10.1111/j.1468-2435.2009.00519.x
- Ni Laoire, C. 2000: Conceptualising Irish rural youth migration: a biographical approach. *International Journal of Population Geography* 6. Hoboken, NJ.
- O'Docherty Madrayo, L. 1988: The Hidden Face of The War in Central America. *The Sociology of Involuntary migration*, *Current Sociology* 36 (2). Bristol.
- Penev, G. 1994: Demografska situacija u pograničnim naseljima Srbije. *Stanovništvo* 32 (3-4). Beograd.
- Pilkington, H. 1998: *Migration, Displacement, and Identity in Post-Soviet Russia*. Routledge. London.
- Ramač, J. 2009: Slavko Gavrilović u istoriografiji o Rusinima u Južnoj Ugarskoj. *Istraživanja* 20. Novi Sad.
- Roper, S. 2007: Cross-border and local co-operation on the island of Ireland: An economic perspective. *Political Geography* 26. Oxford. DOI: 10.1016/j.polgeo.2007.04.002
- Samers, M. 1998: Immigration, 'Ethnic Minorities', and 'Social Exclusion' in the European Union: a Critical Perspective. *Geoforum* 29-2. Oxford.
- Sirácky, J. 2002: *Dlhé hľadanie domova*. Martin.
- Stanković, V. 2006: Opšte i metodološke informacije o popisu. U monografiji: Goran Penev, urednik: „Stanovništvo i domaćinstva Srbije prema popisu 2002. godine“. Beograd.
- Statistical Office of the Republic of Serbia. 2003: Stanovništvo, Popis stanovništva, domaćinstva i stanova u 2002, Nacionalna ili etnička pripadnost, 1. Republički zavod za statistiku. Beograd.
- Statistical Office of the Republic of Serbia. 2004a: Stanovništvo, Popis stanovništva, domaćinstva i stanova u 2002, Uporedni pregled broja stanovnika – 1948, 1953, 1961, 1971, 1981, 1991 i 2002, podaci po naseljima, 9. Republički zavod za statistiku. Beograd.
- Statistical Office of the Republic of Serbia. 2004b: Stanovništvo, Popis stanovništva, domaćinstva i stanova u 2002, Migraciona obeležja, podaci po naseljima, 8. Republički zavod za statistiku. Beograd.
- Statistical Office of the Republic of Serbia. 2010: Broj rođenih i umrlih, po godinama, za period 1989 – 2002. Interna dokumentacija. Novi Sad.

- Stockdale, A. 2002: Towards a typology of out-migration from peripheral areas: a Scottish Case Study. *International Journal of Population Geography* 8. Hoboken, NJ. DOI: 10.1002/ijpg.265
- Stockdale, A. 2006: Migration: Pre-requisite for rural economic regeneration? *Journal of Rural Studies* 22-3, Internet: <http://dx.doi.org/10.1016/j.jrurstud.2005.11.001>
- Stupavský, S. 2010: Slováci v Šíde 1810 – 2010. *Matice slovenská v Srbsku*. Báčsky Petrovec.
- Sullivan, P.M, Kang, J, 1997: Information sources and motivational attributes of Canadian cross-border shoppers: a pilot study. *International Journal of Commerce and Management* 7(1). Indiana, PA.
- Timothy, D., J., Butler, R., W, 1995: Cross-border shopping - a North-American perspective. *Annals of Tourism Research* 22 (1). Oxford.
- VGI. 1982: Topografska karta 1:50.000 Bačka Palanka 377-3. Vojnogeografski institut. Beograd.
- VGI. 1982a: Topografska karta 1:50.000 Bijeljina 427-1. Vojnogeografski institut. Beograd.
- VGI. 1982b: Topografska karta 1:50.000 Bijeljina 427-2. Vojnogeografski institut. Beograd
- VGI. 1983: Topografska karta 1:50.000 Bačka Palanka 377-4. Vojnogeografski institut. Beograd.
- Vrecer, N. 2010: Living in Limbo: Integration of Forced Migrants from Bosnia and Herzegovina in Slovenia. *Journal of Refugee Studies* 23-4. Oxford University Press. DOI: 10.1093/jrs/feq042
- Vujadinović, S., Pavlović, M., Šabić, D. 2010: Integralni održivi razvoj na primeru lokalne geografske sredine. *Glasnik Srpskog geografskog društva XC-2*. Beograd.
- Wang, D. 2004: Hong Kongers' cross-border consumption and shopping in Shenzhen: patterns and motivations. *Journal of Retailing and Consumer Services* 11. Internet: [http://dx.doi.org/10.1016/S0969-6989\(03\)00014-6](http://dx.doi.org/10.1016/S0969-6989(03)00014-6)