

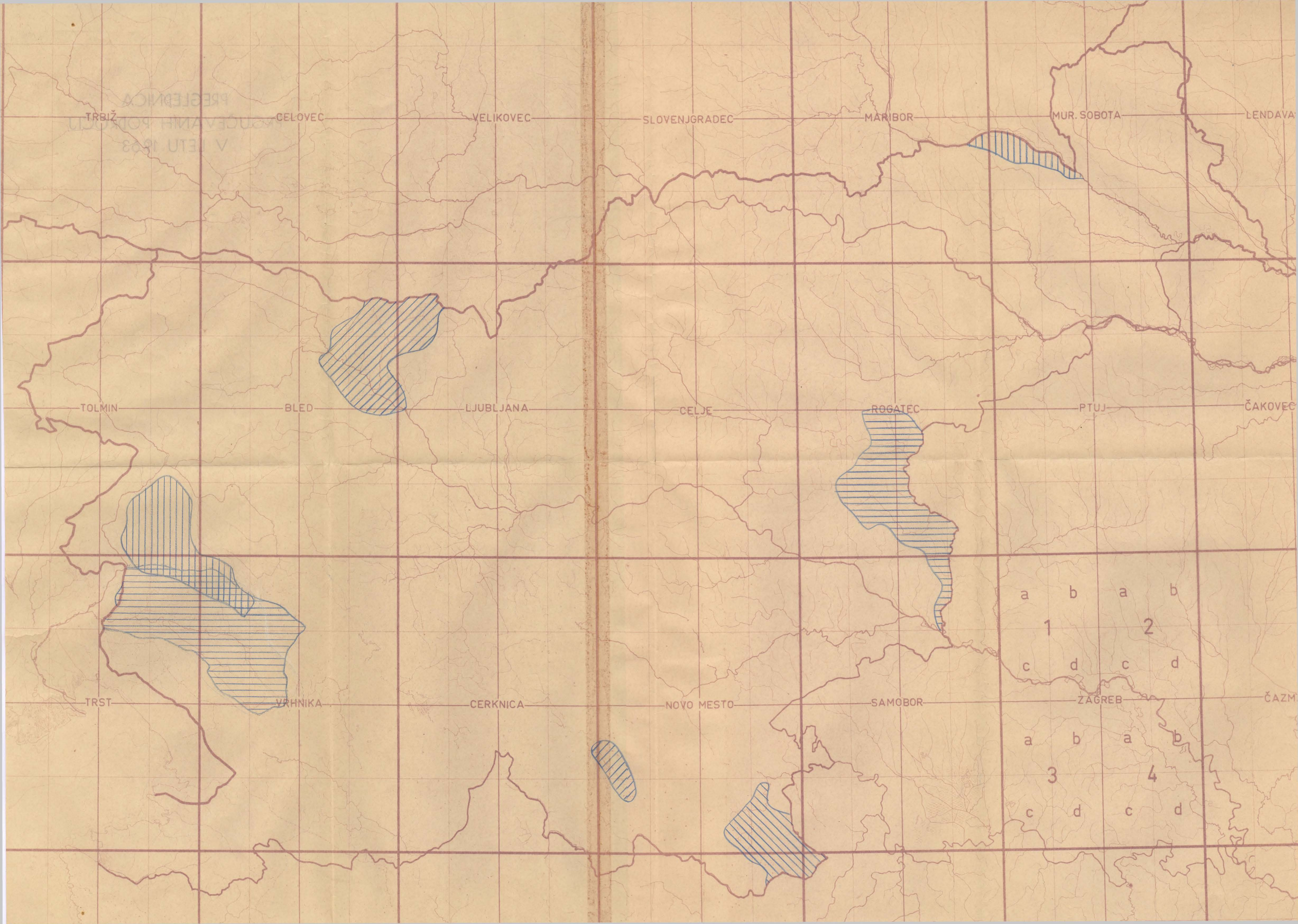
I/81

**SLOVENSKA AKADEMIJA
ZNANOSTI IN UMETNOSTI**

Št.:

Datum:

Predmet: PREGLED PROUČEVANIH PODROČIJ

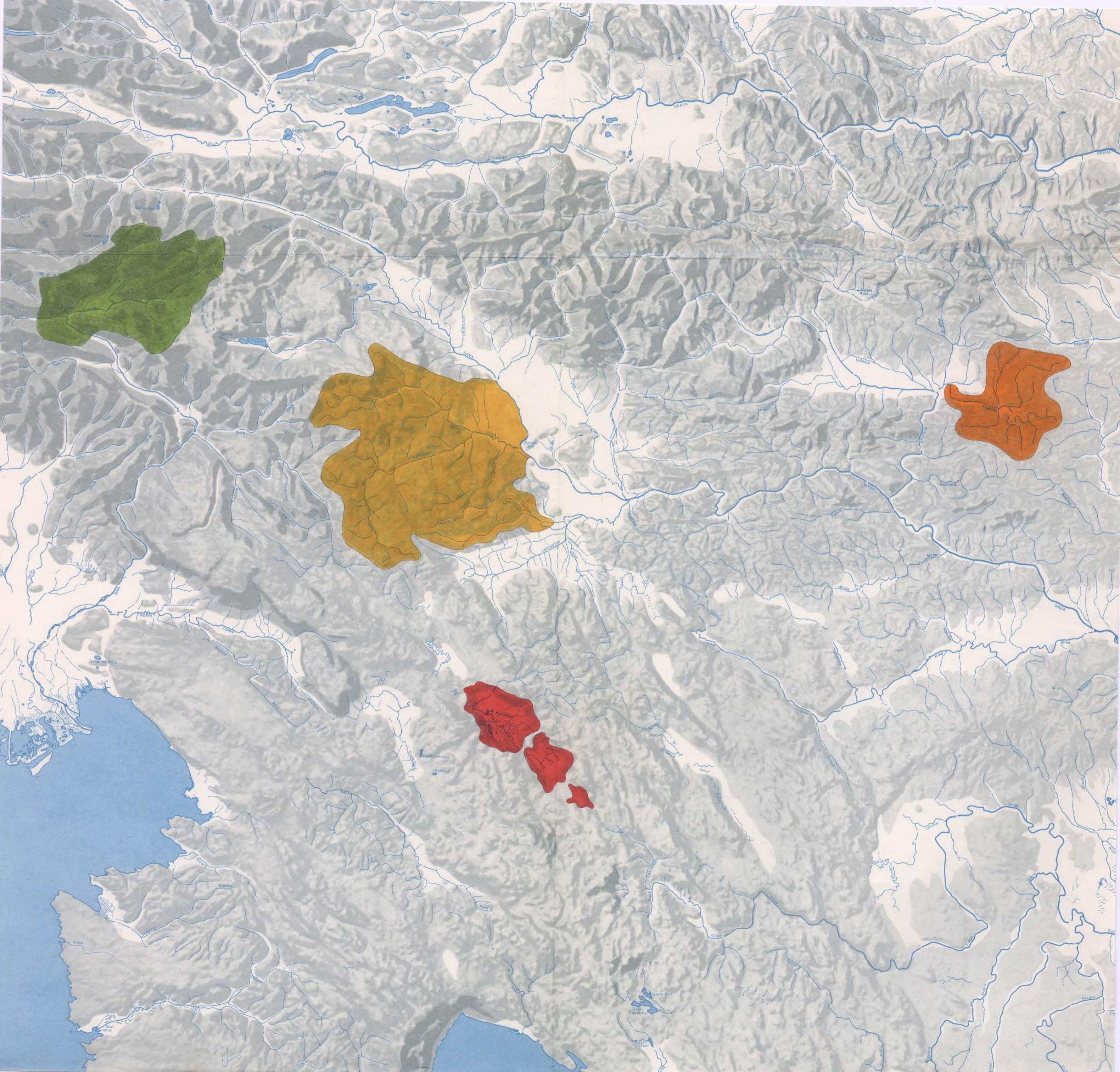


TRBIŽ CELOVEC VELIKOVEC SLOVENJGRADEC MARIBOR MUR. SOBOTA LENDAVA

TOLMIN BLED LJUBLJANA CELJE ROGATEC PTUJ ČAKOVEC

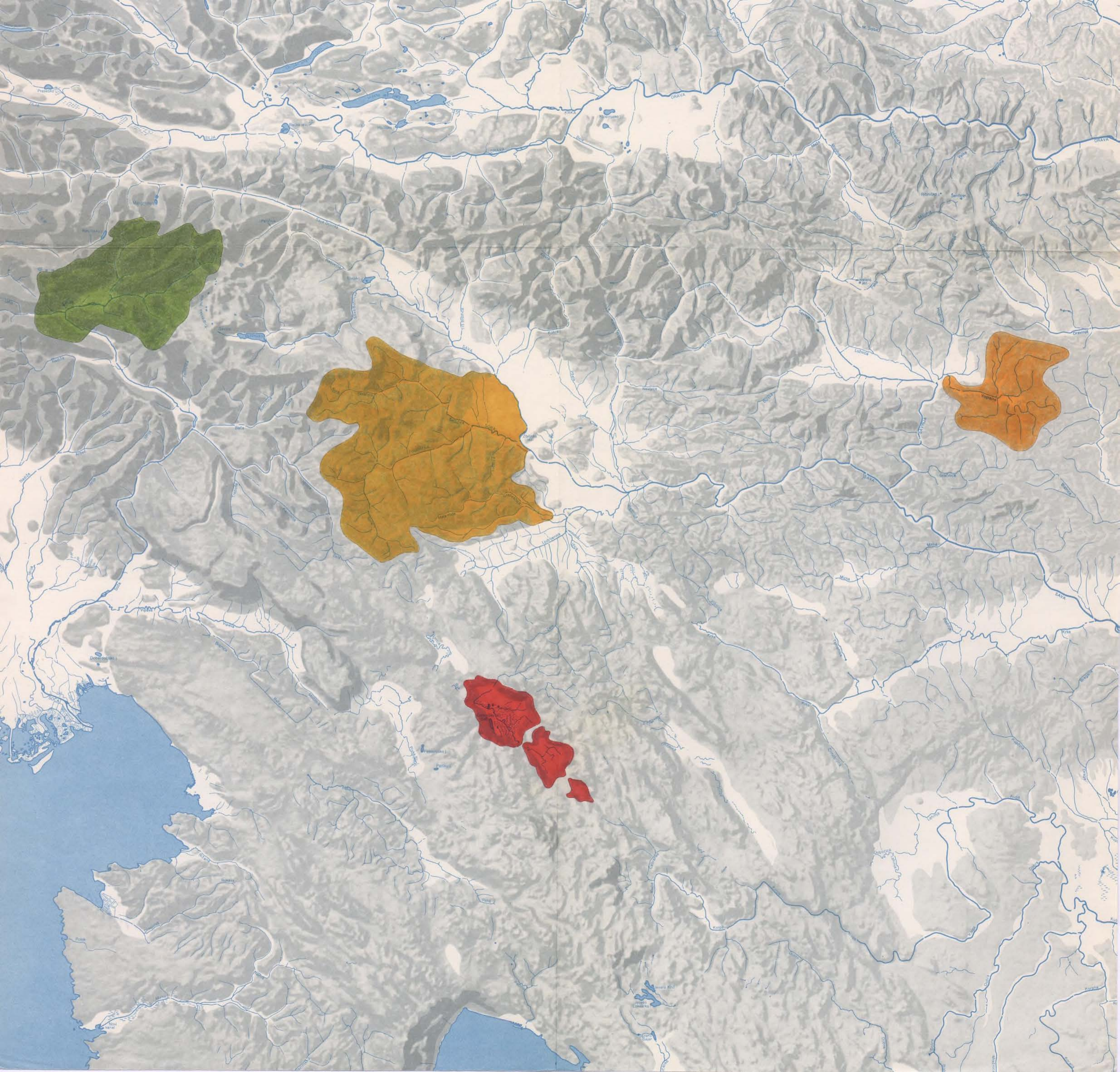
TRST VRHNIKA CERKNICA NOVO MESTO SAMOBOR ZAGREB ČAZMA

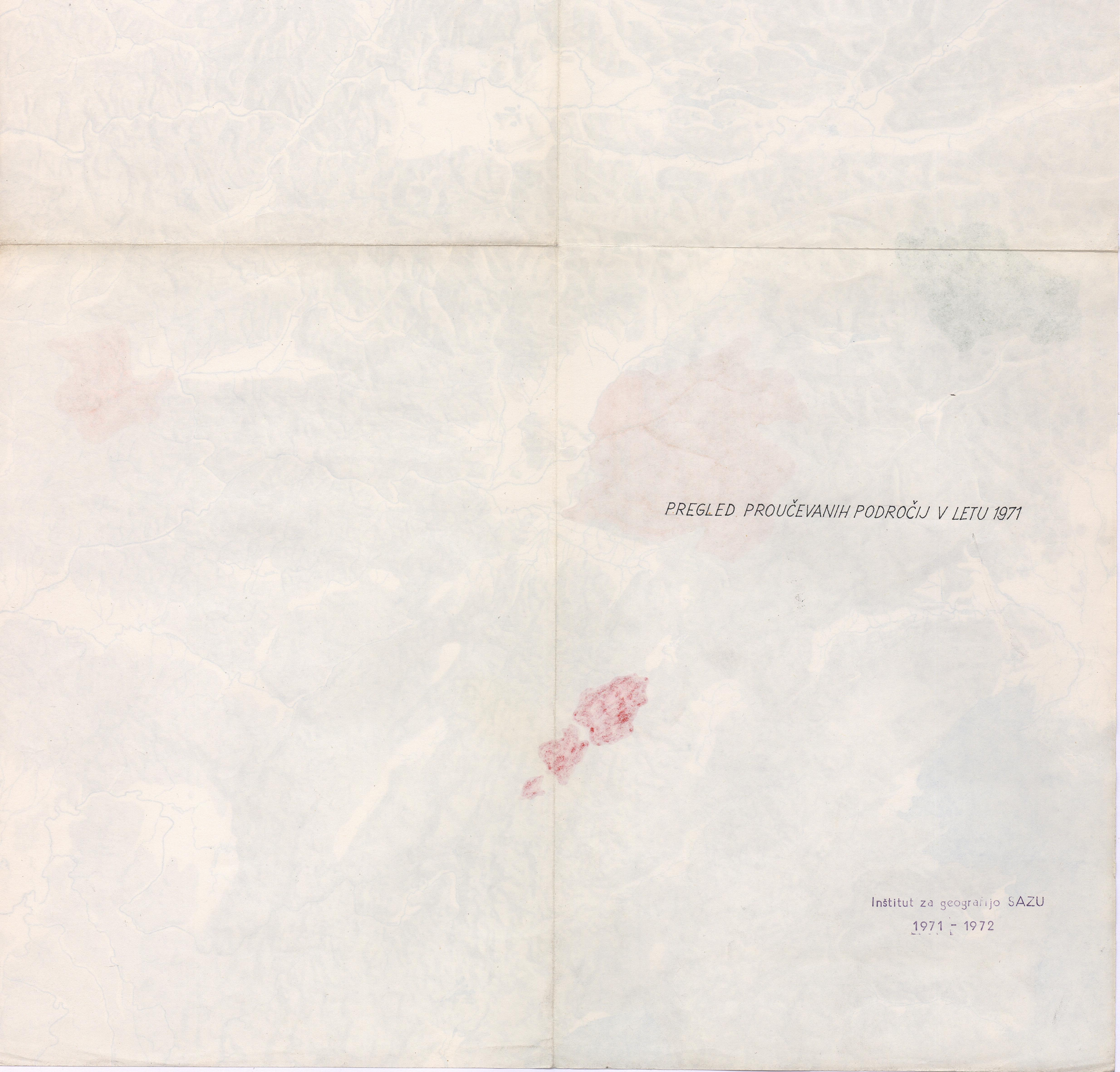
a	b	a	b
1		2	
c	d	c	d
a	b	a	b
3		4	
c	d	c	d



PREGLED PROUČEVANIH PODROČIJ V LETU 1971

Inštitut za geografijo SAZU
1971 - 1972



A topographic map of the Balkan region, showing the outlines of Yugoslavia, Bulgaria, and Greece. The map is rendered in a light blue and green color scheme, typical of older topographic maps. Several areas are highlighted in red, indicating specific study regions. One large red area is located in the northwestern part of Yugoslavia, another large one is in the central-northern part, and a smaller, more irregular red area is in the southern part of the Balkans, near the Greek border. The map is divided into four quadrants by a vertical and a horizontal fold line.

PREGLED. PROUČEVANIH PODROČIJ V LETU 1971

Inštitut za geografijo SAZU

1971 - 1972